

The Annual Quality Assurance Report (AQAR) of the IQAC

All NAAC accredited institutions will submit an annual self-reviewed progress report to NAAC, through its IQAC. The report is to detail the tangible results achieved in key areas, specifically identified by the institutional IQAC at the beginning of the academic year. The AQAR will detail the results of the perspective plan worked out by the IQAC. (Note: The AQAR period would be the Academic Year. For example, July 1, 2012 to June 30, 2013)

Part – A

AQAR for the year (for example 2013-14)

2014-15

1. Details of the Institution

1.1 Name of the Institution

EDUCATION COLLEGE

1.2 Address Line 1

Vill+PO-Basantapur, PS-Domkal

Address Line 2

Dist-Murshidabad, Pin-742406

City/Town

Domkal

State

West Bengal

Pin Code

742406

Institution e-mail address

bes_edu@yahoo.co.in

Contact Nos.

9733767726

Name of the Head of the Institution:

Prof Dr Jakir Hussain Laskar

Tel. No. with STD Code:

NA

Mobile:

9547786753

Name of the IQAC Co-ordinator:

Dr Brojogopal Chand

Mobile:

9475038709

IQAC e-mail address:

bes_edu@yahoo.co.in

1.3 NAAC Track ID (For ex. MHC0GN 18879)

NA

OR

1.4 NAAC Executive Committee No. & Date:

(For Example EC/32/A&A/143 dated 3-5-2004.

This EC no. is available in the right corner- bottom of your institution's Accreditation Certificate)

EC/59/A&A/52 dated 21-4-2012

1.5 Website address:

www.b-e-s.net

Web-link of the AQAR:

<http://b-e-s.net/eduhome/iqac.php>

For ex. <http://www.ladykeanecollege.edu.in/AQAR2012-13.doc>

1.6 Accreditation Details

Sl. No.	Cycle	Grade	CGPA	Year of Accreditation	Validity Period
1	1 st Cycle	B	2.37	2012	5
2	2 nd Cycle	Nil	Nil	Nil	Nil
3	3 rd Cycle	Nil	Nil	Nil	Nil
4	4 th Cycle	Nil	Nil	Nil	Nil

1.7 Date of Establishment of IQAC: DD/MM/YYYY

01/07/2009

1.8 Details of the previous year's AQAR submitted to NAAC after the latest Assessment and Accreditation by NAAC (for example AQAR 2010-11 submitted to NAAC on 12-10-2011)

- i. AQAR - 2007-12- (29/09/2012) (Details of NAAC questionnaires)
- ii. AQAR-2012-2013 (29/03/2017)
- iii. AQAR - 2013-14 (29/03/2017)
- iv. AQAR- ----- (DD/MM/YYYY)

1.9 Institutional Status

University State ☐ Central ☐ Deemed ☐ Private ☐

Affiliated College Yes ☒ No ☐

Constituent College Yes ☐ No ☒

Autonomous college of UGC Yes ☐ No ☒

Regulatory Agency approved Institution Yes ☒ No ☐

(eg. AICTE, BCI, MCI, PCI, NCI)

Type of Institution Co-education ☒ Men ☐ Women ☐

Urban ☐ Rural ☒ Tribal ☐

Financial Status Grant-in-aid ☐ UGC 2(f) ☐ UGC 12B ☐

Grant-in-aid + Self Financing ☐ Totally Self-financing ☒

1.10 Type of Faculty/Programme

Arts ☐ Science ☐ Commerce ☐ Law ☐ PEI (Phys Edu) ☐

TEI (Edu) ☒ Engineering ☐ Health Science ☐ Management ☐

Others (Specify)

1.11 Name of the Affiliating University (*for the Colleges*)

WBUTTEPA

1.12 Special status conferred by Central/ State Government-- UGC/CSIR/DST/DBT/ICMR etc

Autonomy by State/Central Govt. / University

University with Potential for Excellence	<input type="text"/>	UGC-CPE	<input type="text"/>
DST Star Scheme	<input type="text"/>	UGC-CE	<input type="text"/>
UGC-Special Assistance Programme	<input type="text"/>	DST-FIST	<input type="text"/>
UGC-Innovative PG programmes	<input type="text"/>	Any other (<i>Specify</i>)	<input type="text"/>
UGC-COP Programmes	<input type="text"/>		

2. IQAC Composition and Activities

2.1 No. of Teachers	<input type="text" value="5"/>
2.2 No. of Administrative/Technical staff	<input type="text" value="2"/>
2.3 No. of students	<input type="text" value="3"/>
2.4 No. of Management representatives	<input type="text" value="1"/>
2.5 No. of Alumni	<input type="text" value="2"/>
2. 6 No. of any other stakeholder and community representatives	<input type="text" value="1"/>
2.7 No. of Employers/ Industrialists	<input type="text" value="2"/>
2.8 No. of other External Experts	<input type="text" value="1"/>
2.9 Total No. of members	<input type="text" value="17"/>
2.10 No. of IQAC meetings held: 4 (Four). Quarterly meeting held.	

2.11 No. of meetings with various stakeholders: No. Faculty

Non-Teaching Staff Students Alumni Others

2.12 Has IQAC received any funding from UGC during the year? Yes No

If yes, mention the amount

2.13 Seminars and Conferences (only quality related)

(i) No. of Seminars/Conferences/ Workshops/Symposia organized by the IQAC

Total Nos. International National State Institution Level

(ii) Themes

Steps of Educational Research, Training Instructional Strategy of the Pre-Primary and Primary school teachers, Right to Education, Relevance of Guidance & Counselling

2.14 Significant Activities and contributions made by IQAC

Education Fair, Monitoring of academic Activities, Analysis of the B Ed & M Ed Results, Feedback from stakeholders, providing help to the poor and backward students, providing free B Ed Training to the untrained school teachers.

2.15 Plan of Action by IQAC/Outcome

The plan of action chalked out by the IQAC in the beginning of the year towards quality enhancement and the outcome achieved by the end of the year *

Plan of Action	Achievements
Community Activities, Remedial classes, Microteaching, Practice Teaching, Extra-classes, Seminar etc.	Enhancement of Community relation, good relation with practice teaching school, skill development, achievement of students performance etc.

* Academic Calendar of the year 2014-15 has been as Annexure-I

2.15 Whether the AQAR was placed in statutory body Yes No

Management Syndicate Any other body

Provide the details of the action taken

The Governing body was apprised of the teacher recruitment opening of M Phil/Ph D Course in Education, Excellent Result.

Part – B

Criterion – I

1. Curricular Aspects

1.1 Details about Academic Programmes

Level of the Programme	Number of existing Programmes	Number of programmes added during the year	Number of self-financing programmes	Number of value added / Career Oriented programmes
PhD				
PG	M Ed	2009-10	1	
UG	B Ed	2007-08	1	
PG Diploma				
Advanced Diploma				
Diploma				
Certificate				
Others				
Total	02		02	
Interdisciplinary				
Innovative				

1.2 (i) Flexibility of the Curriculum: CBCS/Core/Elective option / Open options:

(ii) Pattern of programmes:

Pattern	Number of programmes
Semester	
Trimester	
Annual	02 (both for B Ed and M Ed)

1.3 Feedback from stakeholders*

(On all aspects)

Alumni ☒ Parents ☒ Employers ☒ Students ☒

Mode of feedback :

Online ☐ Manual ☒ Co-operating schools (for PEI) ☐

**All feedback analysis are attached in the Annexure-II*

1.4 Whether there is any revision/update of regulation or syllabi, if yes, mention their salient aspects.

Yes , as per NCTE regulations 2009

1.5 Any new Department/Centre introduced during the year. If yes, give details.

50 intakes of B Ed introduced

Criterion – II

2. Teaching, Learning and Evaluation

2.1 Total No. of permanent faculty

Total	Asst. Professors	Associate Professors	Professors	Others
14	12	01	01	Nil

2.2 No. of permanent faculty with Ph.D.

5

2.3 No. of Faculty Positions Recruited (R) and Vacant (V) during the year

Asst. Professors		Associate Professors		Professors		Others		Total	
R	V	R	V	R	V	R	V	R	V

2.4 No. of Guest and Visiting faculty and Temporary faculty

04

2.5 Faculty participation in conferences and symposia:

No. of Faculty	International level	National level	State level
Attended		03	
Presented papers		02	
Resource Persons		2	

2.6 Innovative processes adopted by the institution in Teaching and Learning:

Active learning, cooperative learning, Power Point Presentation Seminar Presentation, Debate, Quiz Simulated Teaching, Group Discussion etc.

2.7 Total No. of actual teaching days during this academic year

210

2.8 Examination/ Evaluation Reforms initiated by the Institution (for example: Open Book Examination, Bar Coding, Double Valuation, Photocopy, Online Multiple Choice Questions)

Student checking answer scripts, continuous comprehensive evaluation, double evaluation.

2.9 No. of faculty members involved in curriculum restructuring/revision/syllabus development as member of Board of Study/Faculty/Curriculum Development workshop

2		
---	--	--

2.10 Average percentage of attendance of students

98

2.11 Course/Programme wise distribution of pass percentage:

Title of the Programme	Total no. of students appeared	Division				
		Distinction %	I %	II %	III %	Pass %
B Ed	99		85	14		
M Ed	35		35	00		

2.12 How does IQAC Contribute/Monitor/Evaluate the Teaching & Learning processes:

Extra class for backward learners, assignments, organizing Debates, Seminar, Creative Writing, other Curriculum Activities, Evaluating by exams, oral, discussion etc.

2.13 Initiatives undertaken towards faculty development

<i>Faculty / Staff Development Programmes</i>	<i>Number of faculty benefitted</i>
Refresher courses	2
UGC – Faculty Improvement Programme	1
HRD programmes	2
Orientation programmes	2
Faculty exchange programme	3
Staff training conducted by the university	3
Staff training conducted by other institutions	2
Summer / Winter schools, Workshops, etc.	
Others	

2.14 Details of Administrative and Technical staff

Category	Number of Permanent Employees	Number of Vacant Positions	Number of permanent positions filled during the Year	Number of positions filled temporarily
Administrative Staff	08			
Technical Staff	02			

Criterion – III

3. Research, Consultancy and Extension

3.1 Initiatives of the IQAC in Sensitizing/Promoting Research Climate in the institution

Journal publication, Master's thesis, Field survey, guiding MA in Education, M Ed and Ph D students pursuing Ph D, Doing projects, writing research articles, newspaper in National and International Journals.

3.2 Details regarding major projects

	Completed	Ongoing	Sanctioned	Submitted
Number				
Outlay in Rs. Lakhs				

3.3 Details regarding minor projects

	Completed	Ongoing	Sanctioned	Submitted
Number				
Outlay in Rs. Lakhs				

3.4 Details on research publications

	International	National	Others
Peer Review Journals	1	3	
Non-Peer Review Journals			
e-Journals		2	
Conference proceedings		6	

3.5 Details on Impact factor of publications:

Range Average h-index Nos. in SCOPUS

3.6 Research funds sanctioned and received from various funding agencies, industry and other organisations

Nature of the Project	Duration Year	Name of the funding Agency	Total grant sanctioned	Received
Major projects				
Minor Projects				
Interdisciplinary Projects				
Industry sponsored				
Projects sponsored by the University/ College				
Students research projects <i>(other than compulsory by the University)</i>				
Any other(Specify)				
Total				

3.7 No. of books published i) With ISBN No. Chapters in Edited Books

ii) Without ISBN No.

3.8 No. of University Departments receiving funds from

UGC-SAP CAS DST-FIST
DPE DBT Scheme/funds

3.9 For colleges

Autonomy CPE DBT Star Scheme
INSPIRE CE Any Other (specify)

3.10 Revenue generated through consultancy

25,000/-

3.11 No. of conferences

organized by the
Institution

Level	International	National	State	University	College
Number		1			1
Sponsoring agencies		EC			Management

3.12 No. of faculty served as experts, chairpersons or resource persons

6

3.13 No. of collaborations

International

National

4

Any other

3.14 No. of linkages created during this year

5

3.15 Total budget for research for current year in lakhs :

From Funding agency

From Management of University/College

Total

3.16 No. of patents received this year

Type of Patent		Number
National	Applied	
	Granted	
International	Applied	
	Granted	
Commercialised	Applied	
	Granted	

3.17 No. of research awards/ recognitions received by faculty and research fellows
Of the institute in the year

Total	International	National	State	University	Dist	College

3.18 No. of faculty from the Institution
who are Ph. D. Guides
and students registered under them

3.19 No. of Ph.D. awarded by faculty from the Institution

3.20 No. of Research scholars receiving the Fellowships (Newly enrolled + existing ones)

JRF SRF Project Fellows Any other

3.21 No. of students Participated in NSS events: University level State level
National level International level

3.22 No. of students participated in NCC events: University level State level
National level International level

3.23 No. of Awards won in NSS: University level State level
National level International level

3.24 No. of Awards won in NCC: University level State level
National level International level

3.25 No. of Extension activities organized

University forum College forum
NCC NSS Any other

3.26 Major Activities during the year in the sphere of extension activities and Institutional Social Responsibility

- Community activities - literary campaign, Environment awareness, Blood donation Camp, Health Awareness camp, AIDS Awareness Programme.
- Child Labour, RTE information, Poverty alleviation Programme, Preparing & Providing Instructional materials to the Pre-Primary and Primary students and its exhibitions.

Criterion – IV

4. Infrastructure and Learning Resources

4.1 Details of increase in infrastructure facilities:

Facilities	Existing	Newly created	Source of Fund	Total
Campus area	1.2134acre		Management	1.2134acre
Class rooms	09		Management	09
Laboratories	09		Management	09
Seminar Halls	02		Management	02
No. of important equipments purchased (\geq 1-0 lakh) during the current year.				
Value of the equipment purchased during the year (Rs. in Lakhs)				
Others				

4.2 Computerization of administration and library

Yes, Purple lib

4.3 Library services:

	Existing		Newly added		Total	
	No.	Value	No.	Value	No.	Value
Text Books	5146	550686	377	90480	5890	641166
Reference Books	450	125410	Nil	Nil	450	125410
e-Books						
Journals	493	58276	8	5450	501	63726
e-Journals	3	32936	Nil	Nil	3	32936
Digital Database	2					
CD & Video	54					
Others (specify)	20					

4.4 Technology up gradation (overall)

	Total Computers	Computer Labs	Internet	Browsing Centres	Computer Centres	Office	Departments	Others
Existing	55	16	13		13	02	09	02
Added								

Total	55	16	13		13	02	09	02
-------	----	----	----	--	----	----	----	----

4.5 Computer, Internet access, training to teachers and students and any other programme for technology upgradation (Networking, e-Governance etc.)

ICT training to teacher and students, LCD & Overhead Projector use in teaching, audio-visual aids.

4.6 Amount spent on maintenance in lakhs :

i) ICT 0.7532

ii) Campus Infrastructure and facilities 0.68143

iii) Equipments 0.18287

iv) Others 0.05230

Total : 0.99192

Criterion – V

5. Student Support and Progression

5.1 Contribution of IQAC in enhancing awareness about Student Support Services

Implementing good practice in administration, Maintaining quality of Learning process, fair evaluation process, Anti-raging campaigns, scholarship for backward classes, health service etc.

5.2 Efforts made by the institution for tracking the progression

Through Alumni Association, keeping them records, inviting them in different Programmes organized by College etc.

5.3 (a) Total Number of students

UG	PG	Ph. D.	Others
100	35	Nil	Nil

(b) No. of students outside the state Nil

(c) No. of international students Nil

Men	No	%	Women	No	%
	83	61.5		52	38.5

Last Year						This Year					
General	SC	ST	OBC	Physically Challenged	Total	General	SC	ST	OBC	Physically Challenged	Total
76	24	01	33	00	135	85	27	02	21	00	135

Demand ratio

Dropout % Nil

5.4 Details of student support mechanism for coaching for competitive examinations (If any)

Extra classes in different subjects, Remedial Teaching, Guiding students & giving counseling, providing information about various competitive Exam.

No. of students beneficiaries

100

5.5 No. of students qualified in these examinations

NET SET/SLET GATE CAT
IAS/IPS etc State PSC UPSC Others

5.6 Details of student counselling and career guidance

Giving guidance & counseling to their elective subjects, methods subjects, learning materials, Work Education materials, seminars, debates, personality development, developments of moral values, for higher education, life skill education etc.

No. of students benefitted

115

5.7 Details of campus placement

<i>On campus</i>			<i>Off Campus</i>
Number of Organizations Visited	Number of Students Participated	Number of Students Placed	Number of Students Placed
2	120	18	90

5.8 Details of gender sensitization programmes

Institution has adopted anti-ragging campus, principles & regulations governing the harassment through its gender sensitization unit, regular meeting, guiding & counseling students.

5.9 Students Activities

5.9.1 No. of students participated in Sports, Games and other events

State/ University level 18 National level International level

No. of students participated in cultural events

State/ University level 2 National level International level

5.9.2 No. of medals /awards won by students in Sports, Games and other events

Sports : State/ University level v National level International level

Cultural: State/ University level ☒ National level ☐ International level ☐

5.10 Scholarships and Financial Support

	Number of students	Amount
Financial support from institution		
Financial support from government	√	
Financial support from other sources	Minority scholarship of Govt. West-Bengal	
Number of students who received International/ National recognitions		

5.11 Student organised / initiatives

Fairs : State/ University level ☒ National level ☐ International level ☐
 Exhibition: State/ University level ☒ National level ☐ International level ☐

5.12 No. of social initiatives undertaken by the students

5.13 Major grievances of students (if any) redressed: Nil

Criterion – VI

6. Governance, Leadership and Management

6.1 State the Vision and Mission of the institution

Vission: Preparation of resourceful and skilled teachers
 Mission: To prepare Teacher of high calibre for all levels of Education in time with the National and International goals.

6.2 Does the Institution has a management Information System

Yes, MIS to select, collect, align and integrate issues of institution. It is used for improving the programme of the institute.

6.3 Quality improvement strategies adopted by the institution for each of the following:

6.3.1 Curriculum Development

Multidisciplinary aspects, multi skill development, practice teaching, SUPW, Internship, team teaching, term paper, assignment, Filed experience, internship teaching, seminar etc.

6.3.2 Teaching and Learning

AQA Active learning process (Simulation, Projects Internship, Practice Teaching, group discussion guidance and counselling, Microteaching, Programmed Instruction, Models of teaching etc.

6.3.3 Examination and Evaluation

Internal assessment, mid-term, term end, external evaluation. Practicum –field training, seminars, developments of learning material, field study, text book reviewed and analysis.

6.3.4 Research and Development

Action Research, M Ed Research Projects, Ph D guidance, Research articles Publications in National and International Journals Journal Publications, Bulletin, Research Abstract Publication.

6.3.5 Library, ICT and physical infrastructure / instrumentation

Library with approx books 6340, Journals 8 per year subscription, magazine, regular newspapers, periodicals, Wi-Fi facilities, ICT etc. Computers, Book bank.

6.3.6 Human Resource Management

Faculty development programme, course progression, providing research service, organizing seminars, workshop, provisions of study level, medical level, maternity and paternity leave, regular payment of salary.

6.3.7 Faculty and Staff recruitment

By adopting NCTE & UGC rules & regulations, interviews, passed in governing body meeting before recruitment.

6.3.8 Industry Interaction / Collaboration

IGNOU, SSA, NETAJI SUBAS OPEN UNIVERSITY (NSOU). Union Christian Training College, Berhampore. Chitra Kala Parishad, Bangalore. Tamarind Art Gallery, New York. Birla Academy of Art and Culture, Kolkata. Time and Space . Bangalore.

6.3.9 Admission of Students

Admission of students by tests, Selection on the basis of their academic merit, fair admission

6.4 Welfare schemes for

Teaching	
Non teaching	PF
Students	Book Bank

6.5 Total corpus fund generated

6.6 Whether annual financial audit has been done

Yes

☒

No

☐

6.7 Whether Academic and Administrative Audit (AAA) has been done?

Audit Type	External		Internal	
	Yes/No	Agency	Yes/No	Authority
Academic			Yes	BES
Administrative			Yes	BES

6.8 Does the University/ Autonomous College declares results within 30 days?

For UG Programmes Yes ☐ No ☐

For PG Programmes Yes ☒ No ☐

6.9 What efforts are made by the University/ Autonomous College for Examination Reforms?

Pre-Test, Weightage in internal & external evaluation, Seminar, Year end Exams, Practical/Practicum, Field Work.

6.10 What efforts are made by the University to promote autonomy in the affiliated/constituent colleges?

Preparation of questions as internal examination, Feedback based on performance.

6.11 Activities and support from the Alumni Association

Publication, celebration of cultural activities, organisation of seminar, workshops, debate, quiz competition, Participation in community activities etc.

6.12 Activities and support from the Parent – Teacher Association

Supporting institution by giving regular advice on course curriculum, results, teaching learning process, attending meeting, etc. Community activities, providing resources for development of students etc.

6.13 Development programmes for support staff

Provision of PF, salary and other benefits, provision of leave etc.

6.14 Initiatives taken by the institution to make the campus eco-friendly

Environment awareness programme, cleanliness drive, campus cleanliness programme of regular basis, plantation programme on important days, pollution free zone etc.

Crite

7. Innovations and Best Practices

- 7.1 Innovations introduced during this academic year which have created a positive impact on the functioning of the institution. Give details.

Faculty improvement programmes, various research activities, Faculty exchange programme, Publication and Seminars etc. Innovation in auditorium, Seminar halls, addition of more classrooms in context of two years course curriculum, buying of Projector, white boards, desk chair etc.

- 7.2 Provide the Action Taken Report (ATR) based on the plan of action decided upon at the beginning of the year

Teacher Empowerment Programmes, Maintenance of faculty personal files and Service books, Provisions of recruitment of teachers as per UGC Norms, enrichment of Language, Psycho, Bio & Geo, ET Lab, Provision of Extracurricular activities like games sports and Gymnastic for the Students.

- 7.3 Give two Best Practices of the institution (*please see the format in the NAAC Self-study Manuals*)

Education Fair Participation Digital India activity, Organization of morning assembly for inculcation of all round development of teacher's personality through quiz, debates performing arts fine arts etc. Field visits, CCE Literary competitions, training technology coaching for competitive exam research, consultancy and extension activities, user friendly learning resources, augmentation of library materials, interview and placement for students.

****Provide the details in annexure (annexure need to be numbered as i, ii,iii)***

- 7.4 Contribution to environmental awareness / protection

Plantation programme, awareness programme, cleanliness drive etc.

- 7.5 Whether environmental audit was conducted? Yes ☐ No ☒

- 7.6 Any other relevant information the institution wishes to add. (for example SWOT Analysis)

Not applicable

8. Plans of institution for next year

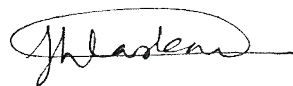
Opening M Phil/Ph D courses in Education. Opening of 50 Intake students at B Ed 50 Students at the M Ed

Name Dr Brojogopal Chand

Name: Prof. Dr. Jakir Hussain Laskar



Signature of the Coordinator, IQAC



Signature of the Chairperson, IQAC

Annexure I

Academic Calendar of the year 2014-15:

ACADEMIC CALENDAR FOR THE SESSION 2014-2015											
EDUCATION COLLEGE											
P.O. Basantapur, Dt. Murshidabad, Pin-742406											
B Ed Programme											
Academic Event		Date									
Orientation Programme		1 st July to 14 th July 2014									
Students Committee Selection		21 st July 2014									
Seminar		6 th August 2014									
Death Anniversary of Rabindra ath Tagore		7 th August 2014									
Sampriti Utsav (Rakhi Bandhan)		10 th August 2014									
Independence Day		15 th August 2014									
Wall Magazine		30 th August 2014									
Teacher's Day		5 th September 2014									
Pre-Test		7 th Sep to 17 th September 2014									
Mini Teaching		8 th Nov to 30 th December 2014									
Educational Programme (Ex-tempore, Debate, Quiz, Seminar)		20 nd Dec to 31 st December 2014									
Co-curricular Activities		3 rd Jan to 7 th Jan 2015									
Practice Teaching/ Final Teaching		10 th Jan to 4 th March 2015									
Test Examination		29 th April to 15 th May 2015									
University Exam/Final Exam		As per the notification of affiliating University K U									
List of Scheduled holidays from 1 st July 2014 to 19 th May 2015											
Sl No	Occasion	Date	Day	Scheduled holidays (except weekly holidays)							
1	Id-Ul-Fitre	29 th July 2014	Tuesday	01							
1	Independence Day	15 th Aug 2014	Friday	00							
2	Durga Puja /Birth of Mahatma Gandhi/Id-Uz-Zoha & Laxmi Puja	28 th Sept to 8 th Oct 2014	Monday to Wednesday	10							
3	Kali Puja/Bhatri dwitya	25 th Oct to 27 th Oct 2014	Saturday to Monday	03							
4	Birth of Guru Nanak	6 th Nov 2014	Thursday	00							
5	X-Mas Day	25 th Dec 2014	Thursday	00							
6	Fateha Duaj-Deham	4 th Jan 2015	Sunday	01							
7	Republic Day	26 th Jan 2015	Monday	01							
8	Saraswati Puja	25 th Jan 2015	Sunday	01							
9	Doljatra	5 th Mar 2015	Thursday	00							
10	Good Friday	3 rd April 2015	Friday	00							
11	Bengali New Year	15 th April 2015	Monday	01							
12	Authority's Discretion	----	----	07							
Total Yearly days-										365	
Total Scheduled Holidays (Except Thursday & Friday)-										20	
Total weekly Holidays –										104	
Admission & Final Examination-										30	
Total Holidays, Admission & Final Examination- (20+104+30)										154	
Total working days exclusive of the period of admission and final examination (365-154)										211	
N.B :											
<ul style="list-style-type: none">Weekly off days: Thursday and Friday.The progress of the Yearly syllabi will be reviewed from time to time and weekly off-days may be utilized to cover the syllabi. The requisitioned days may be compensated later on.											
<div><div></div><div>Weekly off days</div></div>											

Annexure II

Feedback Analysis of Alumni: Session 2014-15

Population: Members of Alumni Association of B Ed and M Ed students

Total Sample: 19

Attributes	Excellent	V. Good	Good	Average	Poor
Environment	74%	26%	00%	00%	00%
Infrastructure	21%	68%	11%	00%	00%
Faculty	26%	53%	21%	00%	00%
Fee structure	42%	42%	16%	00%	00%
Quality of support material	37%	42%	21%	00%	00%
Training & Placement	53%	37%	11%	00%	00%
Library	37%	42%	21%	00%	00%

Feedback Analysis of Employers: Session 2014-2015

Population: Employees

Total sample: 11

Attributes	Excellent	V. Good	Good	Average	Poor
Students' Attendance	00%	73%	27%	00%	00%
Students participation in the different activities	00%	100%	00%	00%	00%
Students result	36%	55%	09%	00%	00%
Discipline among the students	73%	00%	27%	00%	00%
Discipline among the Teachers	45%	55%	00%	00%	00%
Punctuality of the Teachers	55%	45%	00%	00%	00%
Knowledge of the Teachers	55%	45%	00%	00%	00%
Overall performance of the Teachers	00%	100%	00%	00%	00%

Feedback Analysis of Parents: Session 2014-15

Population: Parents of B Ed and M Ed students

Total

Sample: 75

Parameters	Strongly agree	Agree	Neutral	Disagree	Strongly disagree
Getting admission in the education college for my ward is a matter of pride for me.	77%	23%	00%	00%	00%
The admission process in the education college fair and accurate.	47%	53%	00%	00%	00%
My word is improving his knowledge base though interaction with professors of the college.	59%	33%	08%	00%	00%
The discipline in the education college is good.	63%	36%	01%	00%	00%
The atmosphere in the education college is conducive for learning.	46%	49%	05%	00%	00%
There is a positive change in the behavior of my word after taking admission in the college.	54%	39%	07%	00%	00%
I have great respect to the Education college.	52%	39%	09%	00%	00%
Education college is one of the best colleges under affiliating KU	44%	45%	11%	00%	00%
The college information is accessible to all.	44%	44%	12%	00%	00%
Education college website is very informative and regularly updated.	47%	37%	16%	00%	00%
The curriculum of the course is well designed and promotes learning experience of the students.	44%	48%	07%	01%	00%
Employability is given focus in the curriculum design.	44%	48%	07%	00%	00%
The curriculum incorporates recent changes in the area.	55%	35%	09%	01%	00%
Examination results are declared timely.	60%	33%	07%	00%	00%
The colleges Employees are cooperative.	56%	39%	05%	00%	00%
College transportation services are good and timely.	47%	39%	13%	01%	00%
Hostel facilities are good and available when needed	55%	37%	08%	00%	00%
The changes introduced in the college in recent years are progressive.	55%	37%	08%	01%	00%

Feedback Analysis of B Ed Students: Session: 2014-15

Teaching, campus amenities & Infrastructure

Tabular representation

Grade pt	Frequency
Excellent	654
Good	457
Fair	80
Poor	32
V. Poor	36

Table1: Frequency
Table

Graphical representation:



Fig. 1: Pie diagram

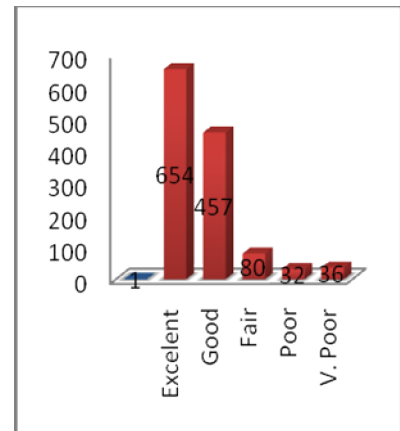


Fig. 1: Bar chart

Feedback Analysis of M Ed Students: Session: 2014-15

Teaching, campus amenities & Infrastructure

Tabular representation

Grade pt	Frequency
Excellent	229
Good	243
Fair	46
Poor	36
V. poor	43

Table1: Frequency
Table

Graphical representation:

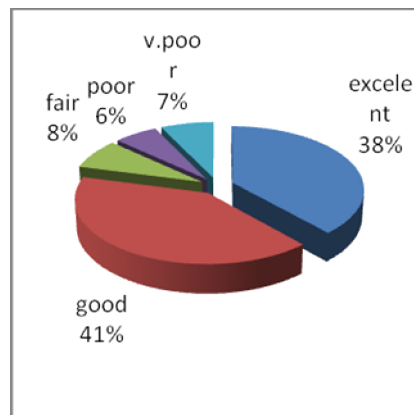


Fig. 1: Pie diagram

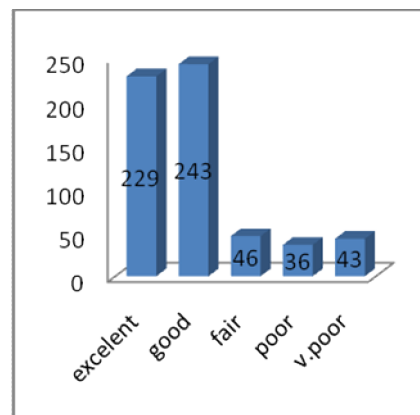


Fig. 1: Bar chart