

The Annual Quality Assurance Report (AQAR) of the IQAC

All NAAC accredited institutions will submit an annual self-reviewed progress report to NAAC, through its IQAC. The report is to detail the tangible results achieved in key areas, specifically identified by the institutional IQAC at the beginning of the academic year. The AQAR will detail the results of the perspective plan worked out by the IQAC. (Note: The AQAR period would be the Academic Year. For example, July 1, 2012 to June 30, 2013)

Part – A

AQAR for the year (for example 2013-14)

2013-14

1. Details of the Institution

1.1 Name of the Institution

EDUCATION COLLEGE

1.2 Address Line 1

Vill+PO-Basantapur, PS-Domkal

Address Line 2

Dist-Murshidabad, Pin-742406

City/Town

Domkal

State

West Bengal

Pin Code

742406

Institution e-mail address

bes_edu@yahoo.co.in

Contact Nos.

9733767726

Name of the Head of the Institution:

Prof Dr Pritish Kumar Mandal

Tel. No. with STD Code:

NA

Mobile:

9836050776

Name of the IQAC Co-ordinator:

Dr Brojogopal Chand

Mobile:

9475038709

IQAC e-mail address:

bes_edu@yahoo.co.in

1.3 NAAC Track ID (For ex. MHC0GN 18879)

NA

OR

1.4 NAAC Executive Committee No. & Date:

(For Example EC/32/A&A/143 dated 3-5-2004.
This EC no. is available in the right corner- bottom
of your institution's Accreditation Certificate)

EC/59/A&A/52 dated 21-4-2012

1.5 Website address:

www.b-e-s.net

Web-link of the AQAR:

<http://b-e-s.net/eduhome/iqac.php>

For ex. <http://www.ladykeanecollege.edu.in/AQAR2012-13.doc>

1.6 Accreditation Details

Sl. No.	Cycle	Grade	CGPA	Year of Accreditation	Validity Period
1	1 st Cycle	B	2.37	2012	5
2	2 nd Cycle	Nil	Nil	Nil	Nil
3	3 rd Cycle	Nil	Nil	Nil	Nil
4	4 th Cycle	Nil	Nil	Nil	Nil

1.7 Date of Establishment of IQAC: DD/MM/YYYY

01/07/2009

1.8 Details of the previous year's AQAR submitted to NAAC after the latest Assessment and Accreditation by NAAC (*for example AQAR 2010-11 submitted to NAAC on 12-10-2011*)

- i. AQAR - 2007-12- (29/09/2012) (Details of NAAC questionnaires
- ii. AQAR-2012-2013 (29/03/2017)
- iii. AQAR----- (DD/MM/YYYY)
- iv. AQAR===== (DD/MM/YYYY)

1.9 Institutional Status

University State ☐ Central ☐ Deemed ☐ Private ☐

Affiliated College Yes ☒ No ☐

Constituent College Yes ☐ No ☒

Autonomous college of UGC Yes ☐ No ☒

Regulatory Agency approved Institution Yes ☒ No ☐

(eg. AICTE, BCI, MCI, PCI, NCI)

Type of Institution Co-education ☒ Men ☐ Women ☐

Urban ☐ Rural ☒ Tribal ☐

Financial Status Grant-in-aid ☐ UGC 2(f) ☐ UGC 12B ☐

Grant-in-aid + Self Financing ☐ Totally Self-financing ☒

1.10 Type of Faculty/Programme

Arts ☐ Science ☐ Commerce ☐ Law ☐ PEI (Phys Edu) ☐

TEI (Edu) ☒ Engineering ☐ Health Science ☐ Management ☐

Others (Specify)

University of Kalyani, WB

1.11 Name of the Affiliating University (*for the Colleges*)

1.12 Special status conferred by Central/ State Government-- UGC/CSIR/DST/DBT/ICMR etc

Autonomy by State/Central Govt. / University

University with Potential for Excellence

UGC-CPE

DST Star Scheme

UGC-CE

UGC-Special Assistance Programme

DST-FIST

UGC-Innovative PG programmes

Any other (*Specify*)

UGC-COP Programmes

2. IQAC Composition and Activities

2.1 No. of Teachers

4

2.2 No. of Administrative/Technical staff

2

2.3 No. of students

3

2.4 No. of Management representatives

1

2.5 No. of Alumni

2

2.6 No. of any other stakeholder and
community representatives

1

2.7 No. of Employers/ Industrialists

1

2.8 No. of other External Experts

1

2.9 Total No. of members

15

2.10 No. of IQAC meetings held: 4 (Four). Quarterly meeting held.

2.11 No. of meetings with various stakeholders: No. Faculty
 Non-Teaching Staff Students Alumni Others

2.12 Has IQAC received any funding from UGC during the year? Yes ☐ No ☒

If yes, mention the amount

2.13 Seminars and Conferences (only quality related)

(i) No. of Seminars/Conferences/ Workshops/Symposia organized by the IQAC

Total Nos. International National State Institution Level

(ii) Themes

Higher Education in Rural Remote India: Problem and Remedies, Method of Teaching, Relevance of Guidance and counselling, Training on instructional strategy primary and primary teachers.

2.14 Significant Activities and contributions made by IQAC

Under the guidance of GB and Sub Committees, there is continuous improvement of teachers and teaching quality, Monitoring of academic activities, analysis of the result, feedback from students, dissipation of knowledge to the neighbourhood surrounding through Education Fair, Providing assistance to the poor and backward students etc, providing academic guidance to the local schools, job guidance to the students, local schools. Implementation of innovating teaching learning process, interacting teaching plan, micro teaching, value education etc are done.

2.15 Plan of Action by IQAC/Outcome

The plan of action chalked out by the IQAC in the beginning of the year towards quality enhancement and the outcome achieved by the end of the year *

Plan of Action	Achievements
Community activities, remedial teaching, group discussion, mini teaching, microteaching, extra classes, seminar, co-curricular activities,	Social interactions with the local community, local institutions like another B Ed College, practice teaching school etc. are increased. Academic benefits of teacher educator, student teachers are also increased. Teacher student relation, peer group interaction are also increased.

* Academic Calendar of the year 2013-14 has been as Annexure-I

2.15 Whether the AQAR was placed in statutory body Yes ☒ No ☐

Management ☒ Syndicate ☐ Any other body ☐ GB

Provide the details of the action taken

The Governing body was apprised of the teacher recruitment, opening of M Phil, Course in Education, Excellent Result.

Part – B

Criterion – I

1. Curricular Aspects

1.1 Details about Academic Programmes

Level of the Programme	Number of existing Programmes	Number of programmes added during the year	Number of self-financing programmes	Number of value added / Career Oriented programmes
PhD				
PG	M Ed	2009-10	1	
UG	B Ed	2007-08	1	
PG Diploma				
Advanced Diploma				
Diploma				
Certificate				
Others				
Total	02		02	
Interdisciplinary				
Innovative				

1.2 (i) Flexibility of the Curriculum: CBCS/Core/Elective option / Open options:

(ii) Pattern of programmes:

Pattern	Number of programmes
Semester	
Trimester	
Annual	02 (for both B Ed and M Ed)

1.3 Feedback from stakeholders* Alumni ☒ Parents ☒ Employers ☒ Students ☒
(On all aspects)

Mode of feedback : Online ☐ Manual ☒ Co-operating schools (for PEI) ☐

**All feedback analysis are attached in the Annexure-II*

1.4 Whether there is any revision/update of regulation or syllabi, if yes, mention their salient aspects.

Yes, as per NCTE regulations 2009

1.5 Any new Department/Centre introduced during the year. If yes, give details.

No

Criterion – II

2. Teaching, Learning and Evaluation

2.1 Total No. of permanent faculty

Total	Asst. Professors	Associate Professors	Professors	Others
14	11	01	01	Nil

2.2 No. of permanent faculty with Ph.D.

3

2.3 No. of Faculty Positions Recruited (R) and Vacant (V) during the year

Asst. Professors		Associate Professors		Professors		Others		Total	
R	V	R	V	R	V	R	V	R	V
			1		1				

2.4 No. of Guest and Visiting faculty and Temporary faculty

04

2.5 Faculty participation in conferences and symposia:

No. of Faculty	International level	National level	State level
Attended		03	
Presented papers		02	
Resource Persons		2	8

2.6 Innovative processes adopted by the institution in Teaching and Learning:

Active learning, Seminar Presentation, Micro-teaching, Power point presentation, group discussion etc.

2.7 Total No. of actual teaching days during this academic year

208

Students checking answer script, Moderation of Question paper, CCE and Double evaluation

2.8 Examination/ Evaluation Reforms initiated by the Institution (for example: Open Book Examination, Bar Coding, Double Valuation, Photocopy, Online Multiple Choice Questions)

2.9 No. of faculty members involved in curriculum restructuring/revision/syllabus development as member of Board of Study/Faculty/Curriculum Development workshop

		2
--	--	---

2.10 Average percentage of attendance of students

97

2.11 Course/Programme wise distribution of pass percentage:

Title of the Programme	Total no. of students appeared	Division				
		Distinction %	I %	II %	III %	Pass %
B Ed	99		85	14		
M Ed	35		35	00		

2.12 How does IQAC Contribute/Monitor/Evaluate the Teaching & Learning processes:

Observation of the class by the Principal, extra classes for backward learners, assignments, organizing seminar, creative writings & other co-curricular activities, evaluation by exam. written, oral test discussion etc.

2.13 Initiatives undertaken towards faculty development

<i>Faculty / Staff Development Programmes</i>	<i>Number of faculty benefitted</i>
Refresher courses	2
UGC – Faculty Improvement Programme	1
HRD programmes	1
Orientation programmes	2
Faculty exchange programme	3
Staff training conducted by the university	3
Staff training conducted by other institutions	1
Summer / Winter schools, Workshops, etc.	1
Others	

2.14 Details of Administrative and Technical staff

Category	Number of Permanent Employees	Number of Vacant Positions	Number of permanent positions filled during the Year	Number of positions filled temporarily
Administrative Staff	08			
Technical Staff	02			

Criterion – III

3. Research, Consultancy and Extension

3.1 Initiatives of the IQAC in Sensitizing/Promoting Research Climate in the institution

Journal publication, Master's thesis, Field survey, guiding MA in Education, M Ed and Ph D students pursuing Ph D, Doing projects, writing research articles, newspaper in National and International Journals etc.

3.2 Details regarding major projects

	Completed	Ongoing	Sanctioned	Submitted
Number				
Outlay in Rs. Lakhs				

3.3 Details regarding minor projects

	Completed	Ongoing	Sanctioned	Submitted
Number				
Outlay in Rs. Lakhs				

3.4 Details on research publications

	International	National	Others
Peer Review Journals	1	4	
Non-Peer Review Journals			
e-Journals		2	
Conference proceedings		6	

3.5 Details on Impact factor of publications:

Range Average h-index Nos. in SCOPUS

3.6 Research funds sanctioned and received from various funding agencies, industry and other organisations

Nature of the Project	Duration Year	Name of the funding Agency	Total grant sanctioned	Received
Major projects				
Minor Projects				
Interdisciplinary Projects				
Industry sponsored				

Projects sponsored by the University/ College				
Students research projects <i>(other than compulsory by the University)</i>				
Any other(Specify)				
Total				

3.7 No. of books published i) With ISBN No. Chapters in Edited Books

ii) Without ISBN No.

3.8 No. of University Departments receiving funds from

UGC-SAP CAS DST-FIST
DPE DBT Scheme/funds

3.9 For colleges Autonomy CPE DBT Star Scheme
INSPIRE CE Any Other (specify)

3.10 Revenue generated through consultancy

3.11 No. of conferences
organized by the Institution

Level	International	National	State	University	College
Number					
Sponsoring agencies					

3.12 No. of faculty served as experts, chairpersons or resource persons

3.13 No. of collaborations International National Any other

3.14 No. of linkages created during this year

3.15 Total budget for research for current year in lakhs :

From Funding agency From Management of University/College
Total

3.16 No. of patents received this year

Type of Patent		Number
National	Applied	
	Granted	
International	Applied	
	Granted	
Commercialised	Applied	
	Granted	

3.17 No. of research awards/ recognitions received by faculty and research fellows
Of the institute in the year

Total	International	National	State	University	Dist	College

3.18 No. of faculty from the Institution
who are Ph. D. Guides
and students registered under them

3.19 No. of Ph.D. awarded by faculty from the Institution

3.20 No. of Research scholars receiving the Fellowships (Newly enrolled + existing ones)

JRF SRF Project Fellows Any other

3.21 No. of students Participated in NSS events: University level State level
National level International level

3.22 No. of students participated in NCC events: University level State level
National level International level

3.23 No. of Awards won in NSS: University level State level
National level International level

3.24 No. of Awards won in NCC: University level State level
National level International level

3.25 No. of Extension activities organized

University forum College forum
NCC NSS Any other

3.26 Major Activities during the year in the sphere of extension activities and Institutional Social Responsibility

- Community activities - literary campaign, Environment awareness, Blood donation Camp, Health awareness camp, Aids Awareness Programme., child labour, RTE information, poverty alleviation programme, preparing and providing instructional materials to the pre-primary students and its Exhibition.

Criterion – IV

4. Infrastructure and Learning Resources

4.1 Details of increase in infrastructure facilities:

Facilities	Existing	Newly created	Source of Fund	Total
Campus area	1.2134acre		Management	1.2134acre
Class rooms	09		Management	09
Laboratories	09		Management	09
Seminar Halls	02		Management	02
No. of important equipments purchased (\geq 1-0 lakh) during the current year.				
Value of the equipment purchased during the year (Rs. in Lakhs)				
Others				

4.2 Computerization of administration and library

Yes, Purple lib

4.3 Library services:

	Existing		Newly added		Total	
	No.	Value	No.	Value	No.	Value
Text Books	5080	538756	66	11930	5146	550686
Reference Books	433	122456	17	2954	450	125410
e-Books						
Journals	478	47316	15	10960	493	58276
e-Journals	2	21608	1	11328	3	32936
Digital Database	2					
CD & Video	54					
Others (specify)	20					

4.4 Technology up gradation (overall)

	Total Computers	Computer Labs	Internet	Browsing Centres	Computer Centres	Office	Departments	Others
Existing	55	16	13		13	02	09	02
Added								
Total	55	16	13		13	02	09	02

4.5 Computer, Internet access, training to teachers and students and any other programme for technology upgradation (Networking, e-Governance etc.)

ICT training to teacher and students, LCD & Overhead Projector use in teaching, audio-visual aids.

4.6 Amount spent on maintenance in lakhs :

i) ICT	0.23373
ii) Campus Infrastructure and facilities	1.96363
iii) Equipments	0.15999
iv) Others	0.10271
Total :	2.46006

Criterion – V

5. Student Support and Progression

5.1 Contribution of IQAC in enhancing awareness about Student Support Services

Implementing good practice in administration, Learning process, fair evaluation process, Anti-raging campaigns, scholarship for backward classes, health service etc.

5.2 Efforts made by the institution for tracking the progression

Through Alumni Association, keeping them records, inviting them in different Programmes organized by College etc.

5.3 (a) Total Number of students

UG	PG	Ph. D.	Others
99	35	Nil	Nil

(b) No. of students outside the state

Nil

(c) No. of international students

Nil

Men	No	%	Women	No	%
	82	61.20		52	38.80

Last Year						This Year					
General	SC	ST	OBC	Physically Challenged	Total	General	SC	ST	OBC	Physically Challenged	Total
92	24	01	16	02	135	76	24	01	33	00	135

Demand ratio

Dropout % Nil

5.4 Details of student support mechanism for coaching for competitive examinations (If any)

Extra class in different subject, Remedial Teaching, Guiding students & giving counseling, Providing information about various competitive Exam.

No. of students beneficiaries

100

5.5 No. of students qualified in these examinations

NET		SET/SLET		GATE		CAT	
IAS/IPS etc		State PSC		UPSC		Others	

5.6 Details of student counselling and career guidance

Giving guidance & counseling to their elective subjects, methods subjects, learning matters seminars, symposia, debates, personality development of moral values for higher education etc.

No. of students benefitted

125

5.7 Details of campus placement

<i>On campus</i>			<i>Off Campus</i>
Number of Organizations Visited	Number of Students Participated	Number of Students Placed	Number of Students Placed
3	130	20	80

5.8 Details of gender sensitization programmes

Institution has adopted anti-ragging campus, principles & regulations governing harassment through its gender sensitization unit, regular meeting, guiding & counseling students.

5.9 Students Activities

5.9.1 No. of students participated in Sports, Games and other events

State/ University level National level International level

No. of students participated in cultural events

State/ University level National level International level

5.9.2 No. of medals /awards won by students in Sports, Games and other events

Sports : State/ University level National level International level

Cultural: State/ University level National level International level

5.10 Scholarships and Financial Support

	Number of students	Amount
Financial support from institution		
Financial support from government	135	
Financial support from other sources		
Number of students who received International/ National recognitions		

5.11 Student organised / initiatives

Fairs : State/ University level National level International level

Exhibition: State/ University level National level International level

5.12 No. of social initiatives undertaken by the students

5.13 Major grievances of students (if any) redressed: Nil

Criterion – VI

6. Governance, Leadership and Management

6.1 State the Vision and Mission of the institution

Vision: Preparation of resourceful and skilled teachers

Mission: To prepare Teacher of high calibre for all levels of Education in time with the National and International goals.

6.2 Does the Institution has a management Information System

Yes, MIS to select, collect, align and integrate issues of institution. It is used for improving the programme of the institute.

6.3 Quality improvement strategies adopted by the institution for each of the following:

6.3.1 Curriculum Development

Multidisciplinary aspects, multi skill development, practice teaching, SUPW, Internship, team teaching, term paper, assignment, Filed experience, internship teaching, seminar etc.

6.3.2 Teaching and Learning

Active learning process (simulation, Projects internship, Practice Teaching group discussion guidance and counselling, Microteaching, Programmed Instruction, Model of teaching etc.

6.3.3 Examination and Evaluation

Internal assessment, mid-term, term end, external evaluation. Practicum –field training, seminars, developments of learning material, field study, text book reviewed and analysis.

6.3.4 Research and Development

Action Research, M Ed Research Projects, Ph D guidance, Research articles Publications in National and International Journals Journal Publications, Bulletin Research Abstract Publication.

6.3.5 Library, ICT and physical infrastructure / instrumentation

Library with approx books 5596 Journals 16 per year subscription, magazine, regular newspapers, periodicals, Wi-Fi facilities, ICT etc. Computers, Book bank.

6.3.6 Human Resource Management

Faculty development programme, course progression, providing research service, organizing seminars, workshop, provisions of study level, medical level, maternity and paternity leave, regular payment of salary.

6.3.7 Faculty and Staff recruitment

By adopting NCTE & UGC rules & regulations, interviews, passed in governing body meeting before recruitment.

6.3.8 Industry Interaction / Collaboration

SSA, NETAJI SUBAS OPEN UNIVERSITY (NSOU). IGNOU, Chitra Kala Parishad, Bangalore. Tamarind Art Gallery, New York. Birla Academy of Art and Culture, Kolkata. Time and Space , Bangalore.

6.3.9 Admission of Students

Admission of students by tests, Selection on the basis of their academic merit, fair admission

6.4 Welfare schemes for

Teaching	
Non teaching	PF
Students	Book Bank

6.5 Total corpus fund generated

6.6 Whether annual financial audit has been done Yes ☒ No ☐

6.7 Whether Academic and Administrative Audit (AAA) has been done?

Audit Type	External		Internal	
	Yes/No	Agency	Yes/No	Authority
Academic				
Administrative	YES	BES	YES	BES

6.8 Does the University/ Autonomous College declares results within 30 days?

For UG Programmes Yes ☒ No ☐

For PG Programmes Yes ☒ No ☐

6.9 What efforts are made by the University/ Autonomous College for Examination Reforms?

Weightage given on practical, practicum, seminar presentation, dissertation, viva-voice and annual Examination etc.

6.10 What efforts are made by the University to promote autonomy in the affiliated/constituent colleges?

Preparation of questions for internal examination, involvement in the examination, our faculty appointed as external examiner by the affiliating university..

6.11 Activities and support from the Alumni Association

Publication, celebration of cultural activities, organisation of seminar, workshops, debate, quiz competition in community activities etc.

6.12 Activities and support from the Parent – Teacher Association

Supporting institution by giving regular advice on course curriculum, results, teaching learning process, attending meeting, etc. Community activities, providing resources for development of students etc.

6.13 Development programmes for support staff

Provision of PF, salary and other benefits, provision of leave, Insurance policy

6.14 Initiatives taken by the institution to make the campus eco-friendly

Environment awareness programme, cleanliness drive, campus cleanliness programme on regular basis, plantation programme on important days, gardening, pollution free zone etc.

Criterion – VII

7. Innovations and Best Practices

7.1 Innovations introduced during this academic year which have created a positive impact on the functioning of the institution. Give details.

Faculty improvement programmes, various research activities, Faculty exchange programme etc.

7.2 Provide the Action Taken Report (ATR) based on the plan of action decided upon at the beginning of the year

Faculty improvement, provision of recruitment of teachers as per NCTE Norms, enrichment of psycho, Bio and Geo lab, language lab, resource centre, provision of extracurricular activities like games and sports for the students, Organised education fair etc. .

7.3 Give two Best Practices of the institution (*please see the format in the NAAC Self-study Manuals*)

Community Lunch, Education Fair and Guidance and counselling

****Provide the details in annexure (annexure need to be numbered as i, ii,iii)***

7.4 Contribution to environmental awareness / protection

Plantation programme, awareness programme, cleanliness drive etc.

7.5 Whether environmental audit was conducted? Yes ☐ No ☒

7.6 Any other relevant information the institution wishes to add. (for example SWOT Analysis)

Not applicable

8. Plans of institution for next year

Opening M Phil/Ph D courses in Education. Intake of 100 students at B Ed level

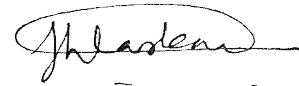
Name Dr Brojogopal Chand



Signature of the Coordinator, IQAC

Name: Prof. Dr. Pritish kumar Mondal(Ex-Principal

Principal: Dr. Jakir Hussain Laskar(Running)



Signature of the Chairperson, IQAC

Annexure I

Academic Calendar of the year 2013-14:

ACADEMIC CALENDAR FOR THE SESSION 2013-2014

EDUCATION COLLEGE

P.O. Basantapur, Dt. Murshidabad, Pin-742406

B Ed Programme

Academic Event	Date
Orientation Programme	1 st July to 10 th July 2013
Students Committee Selection	17 th July 2013
Death Anniversary of Rabindra ath Tagore	7 th August 2013
Independence Day	15 th August 2013
Sampriti Utsav (Rakhi Bandhan)	20 th August 2013
Seminar	24 th August 2013
Teacher's Day	5 th September 2013
Pre-Test	8 th Sep to 15 th September 2013
Wall Magazine	7 th October 2013
Mini Teaching	9 th Nov to 30 th December 2013
Educational Programme (Ex-tempore, Debate, Quiz/Seminar)	21 st Dec to 31 st December 2013
Co-curricular Activities	4 th Jan to 8 th Jan 2014
Practice Teaching/ Final Teaching	15 th Jan to 10 th March 2014
Test Examination	26 th April to 4 th May 2014
University Exam/Final Exam	As per the notification of affiliating University K U


List of Scheduled holidays from 1 st July 2013 to 19 th May 2014				
Sl No	Occasion	Date	Day	Scheduled holidays (except weekly holidays)
1	Id-Ul-Fitre	09 th August 2013	Friday	01
2	Independence Day	15 th August 2013	Thursday	00
3	Birth of Mahatma Gandhi	2 nd October 2013	Wednesday	01
4	Durga Puja/ Laxmi Puja/ Id-Uz-Zoha	12 th to 21 st October 2013	Saturday to Monday	10
5	Kali Puja/Bhatridwitya	2 nd to 5 th November 2013	Saturday to Tuesday	04
6	Birth of Guru Nanak	17 th November 2013	Sunday	01
7	X-Mas Day	25 th December 2013	Wednesday	01
8	Fatcha Duaj-Deham	14 th January 2014	Tuesday	01
9	Republic Day	26 th January 2014	Sunday	01
10	Saraswati Puja	4 th February 2014	Tuesday	01
11	Doljatra	16 th March 2014	Sunday	01
12	Bengali New Year	15 th April 2014	Tuesday	01
13	Good Friday	18 th April 2014	Friday	00
	Authority's Discretion	----	----	00
	Total			23

Month	Sun	Mon	Tue	Wed	Thu	Fri	Sat
July 2013		1	2	3	4	5	6
	7	8	9	10	11	12	13
	14	15	16	17	18	19	20
	21	22	23	24	25	26	27
August 2013	28	29	30	31			
	4	5	6	7	8	9	10
	11	12	13	14	15	16	17
	18	19	20	21	22	23	24
September 2013	25	26	27	28	29	30	31
	1	2	3	4	5	6	7
	8	9	10	11	12	13	14
	15	16	17	18	19	20	21
October 2013	22	23	24	25	26	27	28
	29	30					
	6	7	8	9	10	11	12
	13	14	15	16	17	18	19
November 2013	20	21	22	23	24	25	26
	27	28	29	30	31		
	3	4	5	6	7	8	9
	10	11	12	13	14	15	16
December 2013	17	18	19	20	21	22	23
	24	25	26	27	28	29	30
	1	2	3	4	5	6	7
	8	9	10	11	12	13	14
January 2014	15	16	17	18	19	20	21
	22	23	24	25	26	27	28
	29	30	31				
	5	6	7	8	9	10	11
February 2014	12	13	14	15	16	17	18
	19	20	21	22	23	24	25
	26	27	28	29	30	31	
	2	3	4	5	6	7	8
March 2014	9	10	11	12	13	14	15
	16	17	18	19	20	21	22
	23	24	25	26	27	28	29
	30	31					
April 2014	6	7	8	9	10	11	12
	13	14	15	16	17	18	19
	20	21	22	23	24	25	26
	27	28	29	30			
May 2014	4	5	6	7	8	9	10
	11	12	13	14	15	16	17
	18	19	20	21	22	23	24
	25	26	27	28	29	30	31
June 2014	1	2	3	4	5	6	7
	8	9	10	11	12	13	14
	15	16	17	18	19	20	21
	22	23	24	25	26	27	28
	29	30					

Total Yearly days-	365
Total Scheduled Holidays (Except Thursday & Friday)-	23
Total weekly Holidays –	104
Admission & Final Examination-	30
Total Holidays, Admission & Final Examination (104+23+30)	157
Total working days exclusive of the period of admission and final examination (365-157)	208

N.B :

- Weekly off days: Thursday and Friday.
- The progress of the Yearly syllabi will be reviewed from time to time and weekly off-days may be utilized to cover the syllabi. The requisitioned days may be compensated later on.


Weekly off days

Annexure II

Feedback Analysis of Alumni: Session 2013-14

Population: Members of Alumni Association of B Ed and M Ed students

Total Sample: 71

Attributes	Excellent	V. Good	Good	Average	Poor
Environment	34%	59%	07%	00%	00%
Infrastructure	25%	54%	21%	00%	00%
Faculty	31%	58%	11%	00%	00%
Fee structure	35%	38%	27%	00%	00%
Quality of support material	70%	54%	32%	00%	00%
Training & Placement	28%	42%	30%	00%	00%
Library	23%	45%	32%	00%	00%

Feedback Analysis of Employers: Session 2013-2014

Population: Employees

Total sample: 11

Attributes	Excellent	V. Good	Good	Average	Poor
Students' Attendance	00%	64%	36%	00%	00%
Students participation in the different activities	36%	64%	00%	00%	00%
Students result	36%	64%	00%	00%	00%
Discipline among the students	64%	36%	00%	00%	00%
Discipline among the Teachers	55%	45%	00%	00%	00%
Punctuality of the Teachers	64%	36%	00%	00%	00%
Knowledge of the Teachers	64%	36%	00%	00%	00%
Overall performance of the Teachers	27%	73%	00%	00%	00%

Feedback Analysis of Parents: Session 2013-14

Population: Parents of B Ed and M Ed students

Total Sample: 73

Parameters	Strongly agree	Agree	Neutral	Disagree	Strongly disagree
Getting admission in the education college for my ward is a matter of pride for me.	74%	23%	3%	0%	0%
The admission process in the education college fair and accurate.	57%	40%	3%	0%	0%
My word is improving his knowledge base though interaction with professors of the college.	55%	42%	3%	0%	0%
The discipline in the education college is good.	63%	34%	3%	0%	0%
The atmosphere in the education college is conducive for learning.	44%	45%	11%	0%	0%
There is a positive change in the behavior of my word after taking admission in the college.	42%	53%	5%	0%	0%
I have great respect to the Education college.	50%	49%	1%	0%	0%
Education college is one of the best colleges under affiliating KU	57%	38%	5%	0%	0%
The college information is accessible to all.	55%	37%	8%	0%	0%
Education college website is very informative and regularly updated.	55%	38%	7%	0%	0%
The curriculum of the course is well designed and promotes learning experience of the students.	53%	42%	4%	1%	0%
Employability is given focus in the curriculum design.	54%	36%	10%	0%	0%
The curriculum incorporates recent changes in the area.	51%	41%	7%	1%	0%
Examination results are declared timely.	54%	38%	8%	0%	0%
The colleges Employees are cooperative.	61%	32%	7%	0%	0%
College transportation services are good and timely.	53%	36%	11%	1%	0%
Hostel facilities are good and available when needed	45%	48%	7%	0%	0%
The changes introduced in the college in recent years are progressive.	60%	34%	5%	1%	0%

Feedback Analysis of B Ed Students: Session: 2013-14

Teaching, campus amenities & Infrastructure

Tabular representation

Grade pt	Frequency
Excellent	626
Good	386
Fair	116
Poor	43
V. poor	36

Graphical representation:

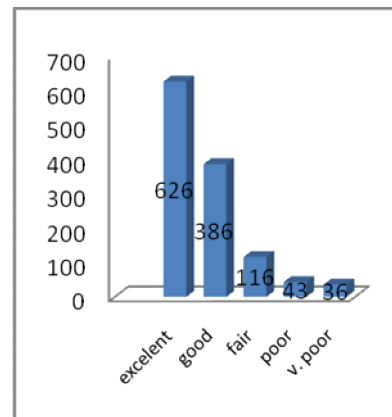
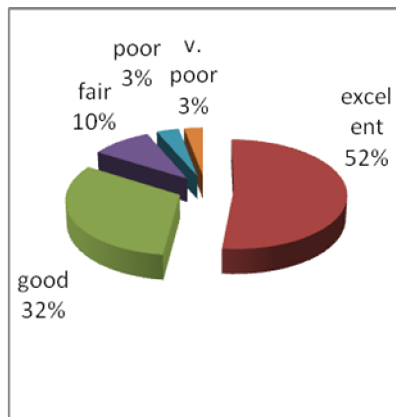


Table1: Frequency table

Fig. 1: Bar diagram

Fig. 2: Pie diagram

Feedback Analysis of M Ed Students: Session: 2013-14

Teaching, campus amenities & Infrastructure

Tabular representation

Grade pt	Frequency
Excellent	170
Good	161
Fair	55
Poor	17
V Poor	11

Graphical representation:

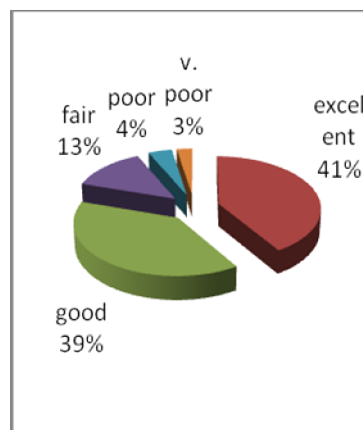
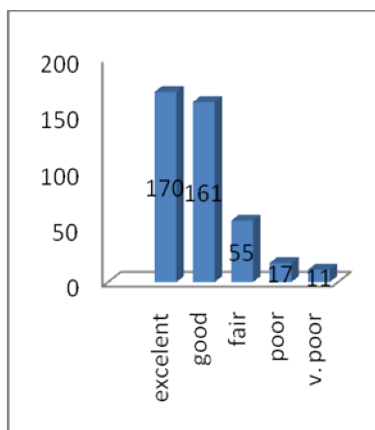


Table1: Frequency table

Fig. 1: Bar diagram

Fig. 2: Pie diagram